



Features

1. 150A ;
Intermittent 150A load.
2. ;
It has one set of normally open contacts.
3. 22W;
4. 100M (1000VDC) 2kV;
5. IP :IP67;
IP protection level: IP67.
6. IEC 60664-1 GB/T14048.1 GB/T14048.4 ;
7. RoHs 2015/863/EU REACH 1907/2006/EC ;
8. CE RoHS

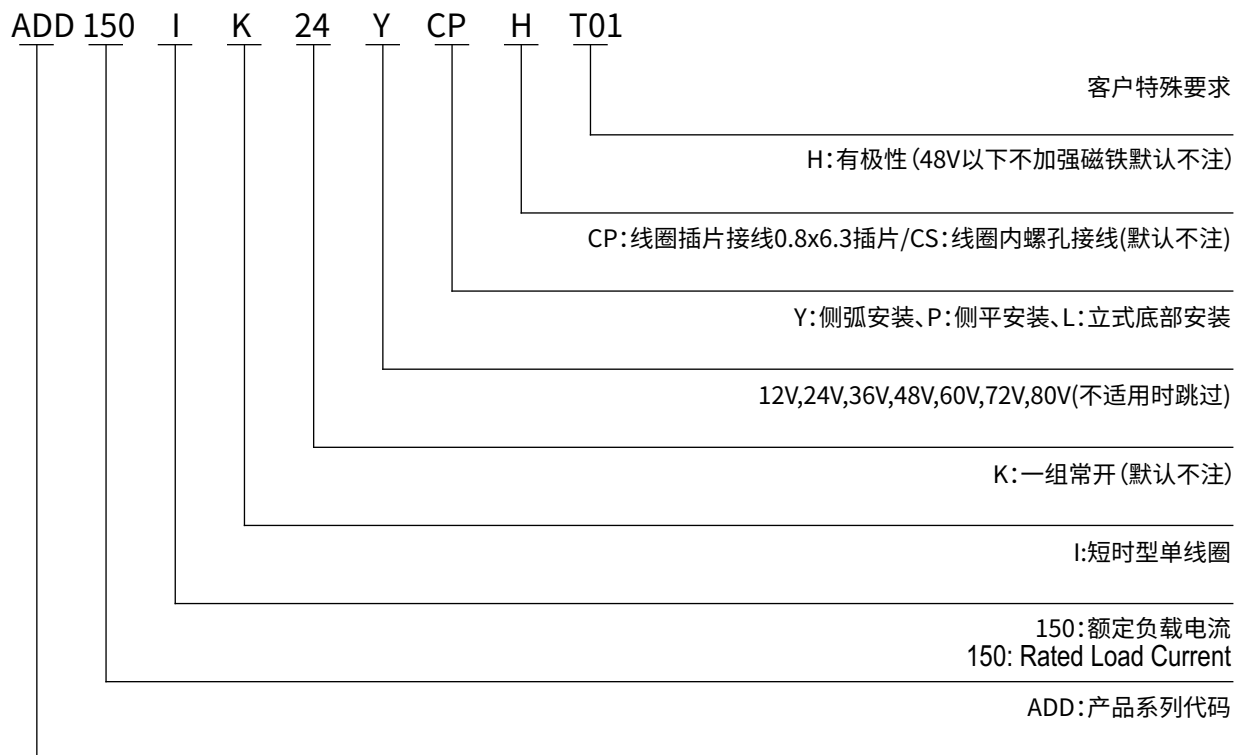
at23
Performance Parameters at23

Contact Arrangement	1K (1NO)		70% Us
Contact Resistance	5m		5% -40% Us
	80mV (at 80A)		5ms
Overload Current	7Ie, 1s	Pickup Time	20ms
Temperature	-40 ~-55		10ms
Load Terminal	M6 M6 External Thread		50Hz/60Hz 1500VAC/1min
	3.5g,10~200Hz,1/2		50Hz/60Hz 1500VAC/1min
Relative Humidity	5 ~95 RH	Insulation Resistance	Initial State 100M 1min
	62.5x61x67.8mm		After Electrical Life 50M 1min
	Intermittent	Shock	Stability 20g
()	50000 (48V/150A)		Strength 50g
	6-8N.m		100000
/	/		1.2-2.0N.m

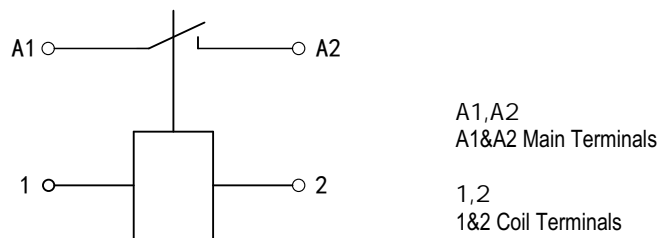
ADD150I ADD150I Coil Parameters

			Coil Resistance	Coil Power Consumption
12V	70% U _s	5% -40% U _s	7.3 ± 10%	20W± 10%
24V	70% U _s	5% -40% U _s	26.8 ± 10%	22W± 10%
36V	70% U _s	5% -40% U _s	65 ± 10%	20W± 10%
48V	70% U _s	5% -40% U _s	134 ± 10%	20W± 10%
60V	70% U _s	5% -40% U _s	190 ± 10%	20W± 10%
72V	70% U _s	5% -40% U _s	272 ± 10%	20W± 10%

Model Coding



Wiring Diagram



ADD150I
ADD150I Wiring Diagram

Outline Installation Dimension Drawing

2-M6

6-8N.m

2-M4

1.2-2.0N.m

○ ○ ○ ○
○ ○ ○ ○

□

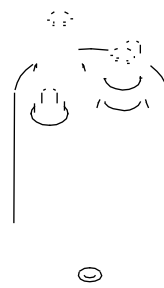
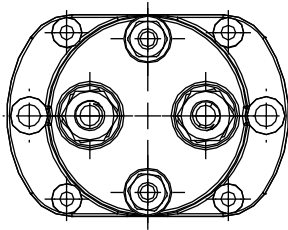
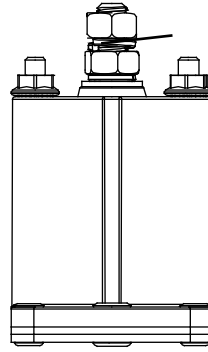
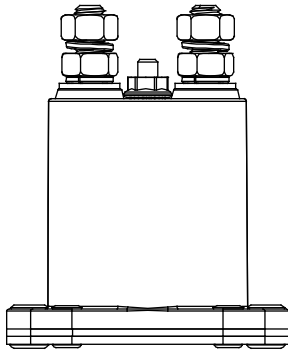
2-M6

6-8N.m

2-M4

1.2-2.0N.m

Outline Installation Dimension Drawing



2-M6

6-8N.m

2-M4

1.2-2.0N.m

2-M6

6-8N.m

T=0.8x6.3

Spade Terminal

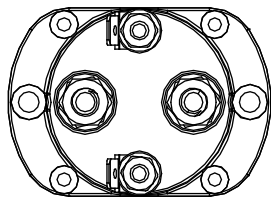
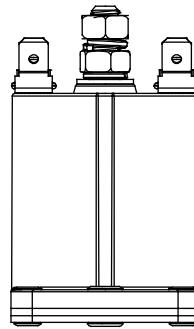
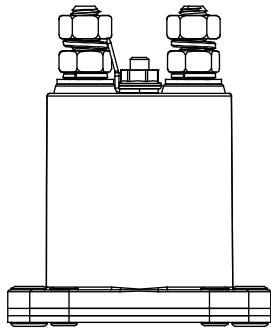
Outline Installation Dimension Drawing

2-M6

6-8N.m

T=0.8x6.3

Spade Terminal

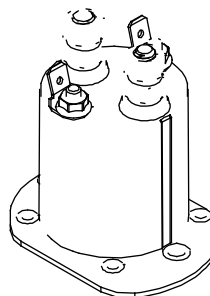


2-M6

6-8N.m

T=0.8x6.3

Spade Terminal



Usage Cautions

1.

the samples provided by AOKAI and the corresponding signed and controlled specification.

2.

to obtain more technical support.

3.

4.

5.

with thermal radiation. It is recommended to use it with a cooling fan.

6. 30cm

7.

8.

9.

10.

tion device.

11.

12.

It is strictly prohibited to wiring when power on.