



**fE**  
Features

1. 125A ;  
Continuous 125A load.
2. ;  
It has one sets of normally open and one sets of normally closed contacts.

at23

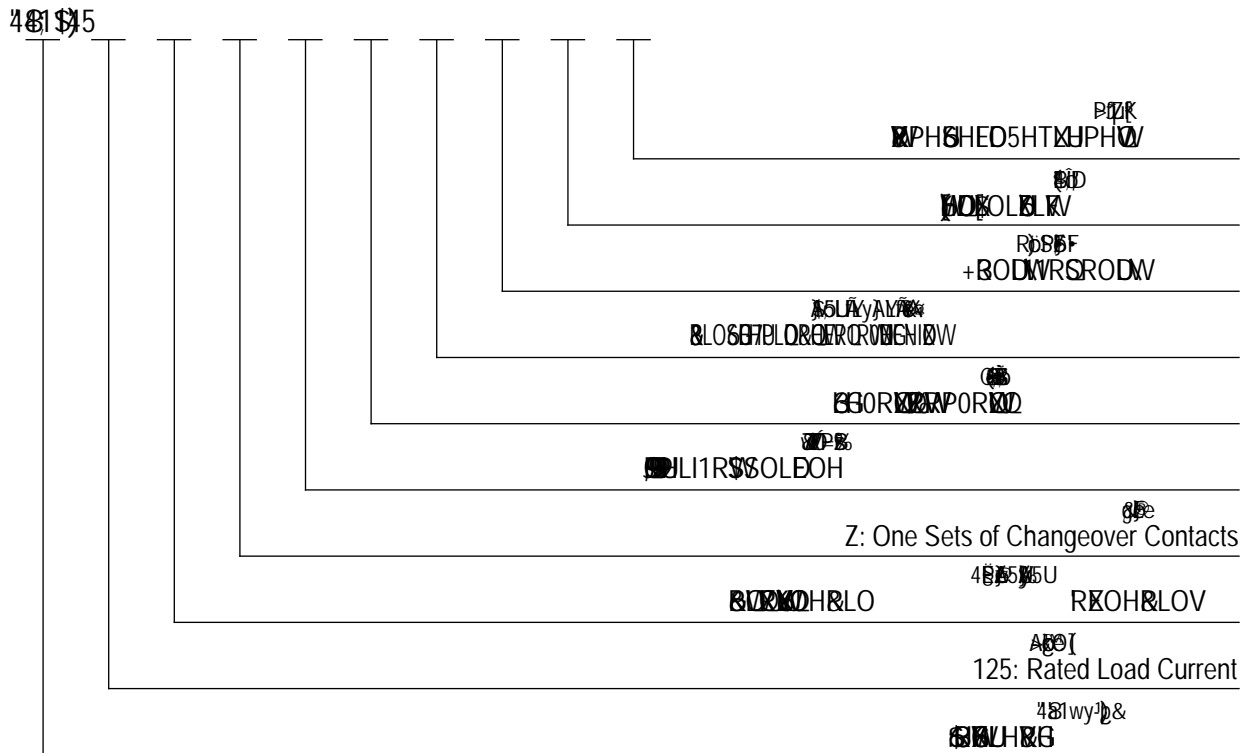
Performance Parameters  

Contact Arrangement		
	0.5m	
	80mV(at 125A)	
	7le, 1s	30ms
	-40 ~-65	30ms
	M8	50Hz/60Hz 1000VAC/1min
	3.5g,10~200Hz,1/2	50Hz/60Hz 1000VAC/1min
	20 ~90 RH	100M 1min
	57x48x89mm	50M 1min
	6000	
	8-10N.m	

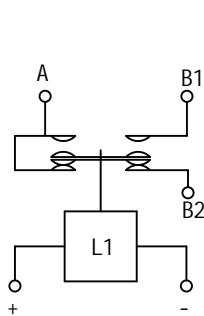
# ASW125SZ Coil Parameter

Ec kn' J c nh cig	Rkemwr' J c nh cig	J 8 E8 tc rc wh' J c nh cig	J 8 Bolding Current	Coil Power Consumption
12V	70% Us	10% Us	1A	7 15W
24V	70% Us	10% Us	0.6A	7 15W
36V	70% Us	10% Us	0.6A	7 15W
48V	70% Us	10% Us	0.5A	7 15W
60V	70% Us	10% Us	0.25A	7 15W
72V	70% Us	10% Us	0.2A	7 15W

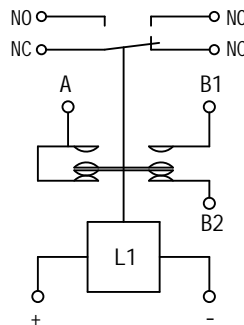
## Model Coding



## L1A75C Wiring Diagram



Wiring Diagram Without Micro Switch

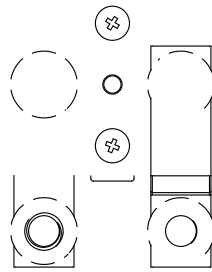


Wiring Diagram with Micro Switch

- NC : Cwzknkctm' Ec b h ceh
- NO : Cwzknkctm' Ec b h ceh
- + -
- + : Coil Terminals

# Outline Installation Dimension Drawing

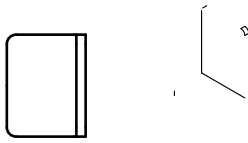
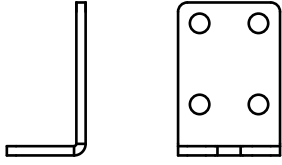
ASW125SZ



2-M8  
Nc cX : K ktkb i : 4/0:  
8-10N.m  
Vc tswg : /32P0o

T=0.8x6.3  
Ec kn : K ktkb i : V1 20.,805  
Spade Terminal

# Outline Installation Dimension Drawing



## Usage Cautions

1.

V\ ku' X c ewogb h' ku' c b nm' hc t' ewuh c ogt' ugngeh kc b' tghgtgb eg. CC MCK' \ cu' h tk  
kb' h \ ku' X c ewogb h O' Rtc X weh' urgekhech kc b u' cb X' rctcogh gtu' ocm' dg' e\ cb ig)  
kb ec b ukuh gb h' dgecwug' c h' b c h' wrX ch gX' kb' h kogO' Hc t' h \ g' urgekhe' rctcogh  
h \ g' ucorngu' rtc xkX gX' dm' CC MCK' cb X' h \ g' ec ttgurc b X kb i' ukib gX' cb X' ec b h t

2.